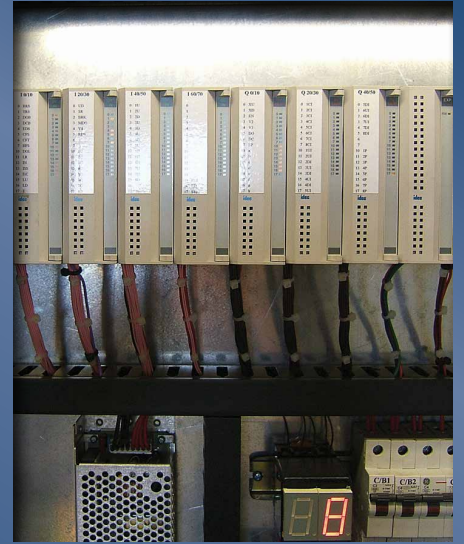
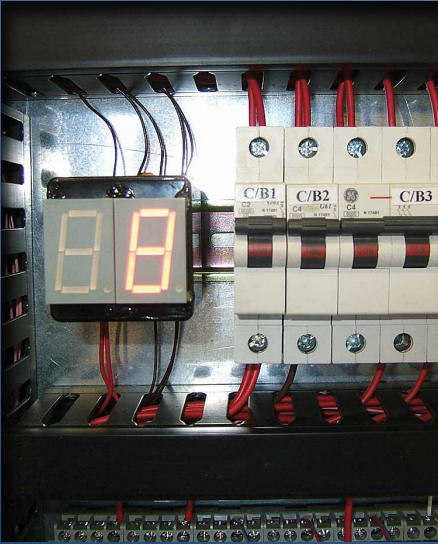
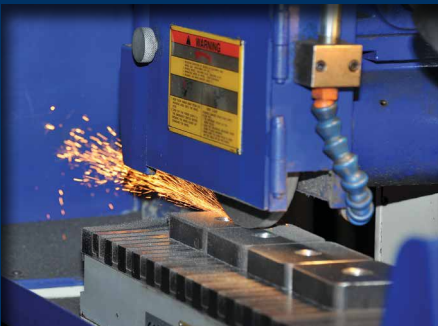


# controllers



Electra Lift is an elevator and escalator maintenance company who understands the importance of service, reliability and performance. For over four decades we have provided a comprehensive range of services to a growing number of organisations in need of cost efficient lift maintenance, repairs and modernisations.



efficient  
reliable  
customised  
support



## RIDE QUALITY

With a new solid-state regulator, the optimum ride is computed with smoother acceleration, deceleration and stopping functions. The unit uses a digital encoder for speed reference and is constantly communicating between the motor and the regulator for any velocity changes.

## FLOOR LEVEL ACCURACY

The lift will stop electrically at floor level with the mechanical brake holding for a predetermined time once stopped. Greater floor accuracy is produced [+/- 5mm] with a smoother stop.

## RELIABILITY

With a PLC controlling the main logic functions there are no moving parts and coupled with its robust design dramatically improves reliability. Add to this enclosed relays and contactors, controller failure would be negligible.

## LESS WEAR ON MECHANICAL EQUIPMENT

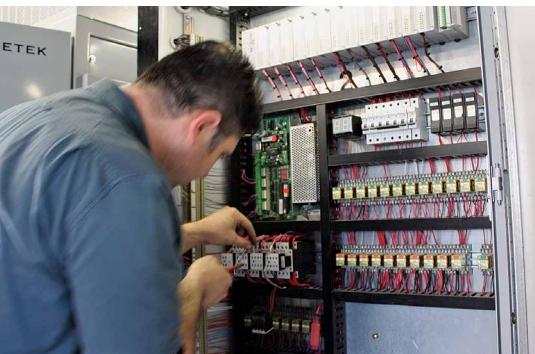
With the lift stopping electrically and not with the mechanical brake there is less rope slip giving a longer life for lifting ropes and driving sheaves. The gearbox and associated bearings also benefit.

## SOFTWARE CHANGES

Some lift companies use overseas-developed software, which can create problems if corrections are to be made. As we design our software, updates if needed can be installed on site without any delay.

## COMPLIANCE

The system has been tested by the Work Cover Australia authorities and complies with the latest Standards Association of Australia rules.



The 3000 series controller was developed by Electra Lift Company and is presently serving customers with a reliable and efficient vertical transport system. Controllers are manufactured at our factory by our qualified technicians with software written by Electra Lift engineers.

Main logic functions are processed by the PLC, which is interfaced on selected outputs to high speed relays with higher current and voltage circuits controlled by contactors. The drive section consists of a Variable Voltage Variable Frequency 'VVVF' regulator.



Our Control System and Drive consists of:

- Software designed specifically for lifts
- Accurate motor modelling for close control
- Adjustable switching frequency for quieter operation
- Full Flux Vector operation with Encoder
- User-friendly interface and menus
- Built in filters
- Four Quadrant operation option with regenerative energy feed back into mains and reduced harmonic distortion
- Pre-set parameters to aid commissioning
- Speeds set in metres per second with accel/ decel rates in metres per second squared
- Fully adjustable S ramps for smoother ride comfort
- Can be commissioned from a laptop.

Upgrading your existing equipment to provide reliability and aesthetic improvements can include:

- New Control Systems
- New Drive Units
- Digital Indication
- Push Buttons
- New Power Door Operators
- OH&S Improvements
- New Lift Car Interior.

**Contact our sales team to discuss your requirements.**



For a customised quotation, contact Electra Lift for a direct assessment of your needs.

**come visit our showroom**

at Unit 13, 4 Bronti Street, Mascot

PHONE **02 9304 4600**

[electralift.com.au](http://electralift.com.au)